

Landfill Leachate – 2021-11-16

Sample Overview

Site	Landfill Leachate
Date sampled	2021-11-16
Report type	Standard WW

qPCR Results

Test	Copy no.	%
bacF (Total Bacteria 1)	236354	100.0%
thau1 (Thauera Group 1)	31622	13.4%
thau2 (Thauera Group 2)	28013	11.9%

Bacteria

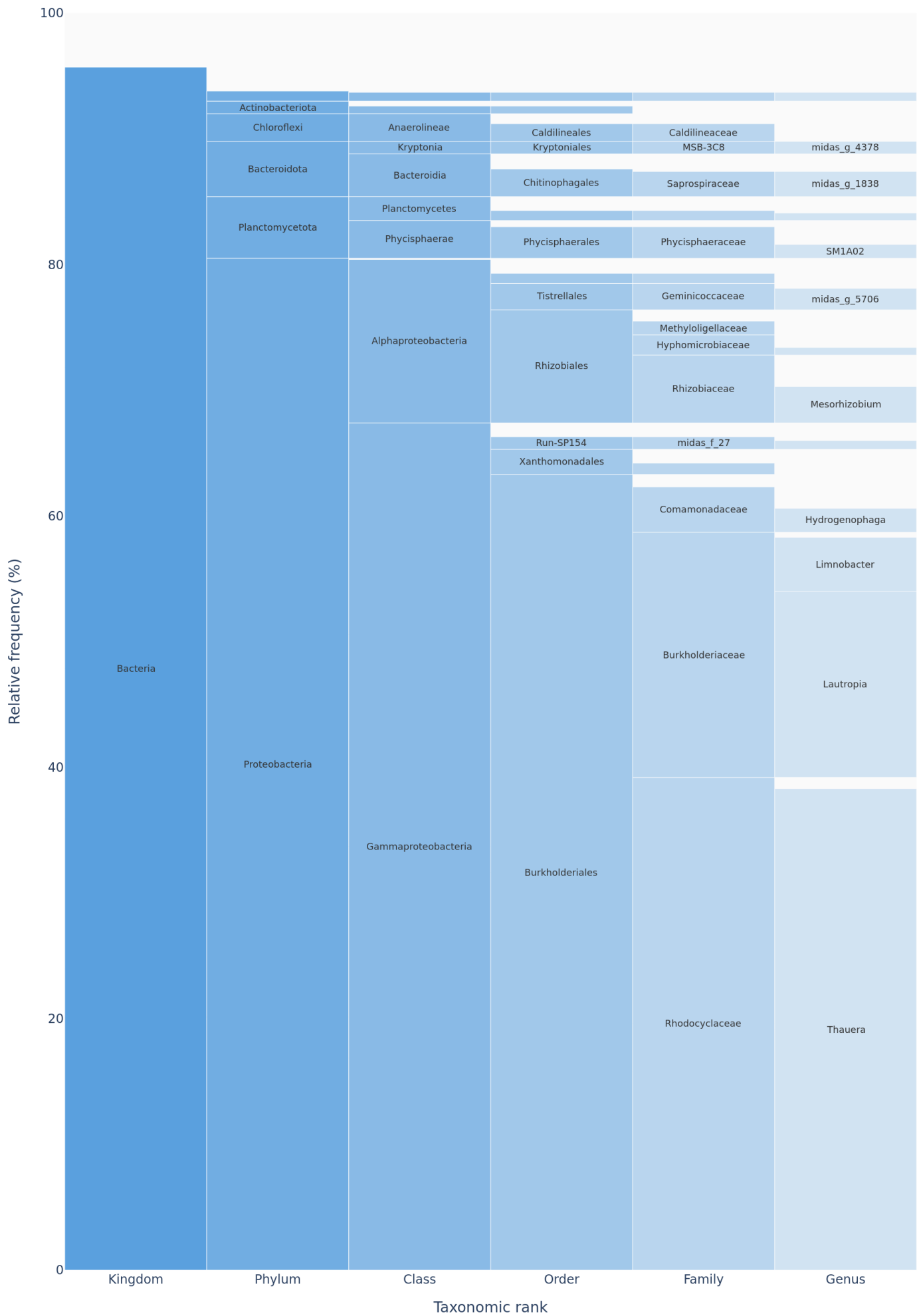
Kingdom	Phylum	Class	Order	Family	Genus	Rel. freq. %
Bacteria	—	—	—	—	—	0.1%
Bacteria	Acidobacteriota	Acidobacteriae	Bryobacterales	Bryobacteraceae	Bryobacter	0.2%
Bacteria	Acidobacteriota	Acidobacteriae	PAUC26f	midas_f_59582	midas_g_61117	0.2%
Bacteria	Acidobacteriota	Acidobacteriae	Paludibaculum	midas_f_675	midas_g_42266	0.1%
Bacteria	Actinobacteriota	Acidimicrobiia	Actinomarinales	midas_f_591	midas_g_4688	0.1%
Bacteria	Actinobacteriota	Acidimicrobiia	Actinomarinales	midas_f_591	midas_g_591	0.1%
Bacteria	Actinobacteriota	Acidimicrobiia	Microtrichales	Ilumatobacteraceae	Ilumatobacter	0.1%
Bacteria	Actinobacteriota	Actinobacteria	Micrococcales	Intrasporangiaceae	Tetrasphaera	0.2%
Bacteria	Actinobacteriota	Actinobacteria	Micrococcales	Microbacteriaceae	—	0.1%
Bacteria	Actinobacteriota	Actinobacteria	Micrococcales	Microbacteriaceae	Leucobacter	0.2%
Bacteria	Actinobacteriota	Actinobacteria	Micrococcales	Microbacteriaceae	Microbacterium	0.1%
Bacteria	Actinobacteriota	Thermoleophilia	Gaiellales	midas_f_269	midas_g_473	0.1%
Bacteria	Armatimonadota	Fimbriimonadia	Fimbriimonadales	Fimbriimonadaceae	—	0.1%
Bacteria	Bacteroidota	Bacteroidia	—	—	—	0.1%
Bacteria	Bacteroidota	Bacteroidia	Bacteroidales	Prolixibacteraceae	—	0.3%
Bacteria	Bacteroidota	Bacteroidia	Bacteroidales	Rikenellaceae	midas_g_6724	0.1%
Bacteria	Bacteroidota	Bacteroidia	Chitinophagales	Saprosiraceae	midas_g_1838	2.0%
Bacteria	Bacteroidota	Bacteroidia	Chitinophagales	midas_f_108	midas_g_21052	0.2%
Bacteria	Bacteroidota	Bacteroidia	Cytophagales	Microscillaceae	midas_g_5053	0.2%
Bacteria	Bacteroidota	Bacteroidia	Flavobacteriales	Crocinitomicaceae	Fluviicola	0.1%
Bacteria	Bacteroidota	Bacteroidia	Sphingobacteriales	—	—	0.1%
Bacteria	Bacteroidota	Bacteroidia	Sphingobacteriales	NS11-12_marine_group	—	0.3%
Bacteria	Bacteroidota	Kryptonia	Kryptoniales	MSB-3C8	midas_g_4378	1.0%
Bacteria	Bdellovibrionota	Bdellovibrionia	Bacteriovoracales	Bacteriovoracaceae	—	0.1%
Bacteria	Bdellovibrionota	Bdellovibrionia	Bdellovibrionales	Bdellovibrionaceae	—	0.1%
Bacteria	Bdellovibrionota	Bdellovibrionia	Bdellovibrionales	Bdellovibrionaceae	Bdellovibrio	0.1%
Bacteria	Chloroflexi	Anaerolineae	Anaerolineales	Anaerolineaceae	—	0.1%
Bacteria	Chloroflexi	Anaerolineae	Anaerolineales	Anaerolineaceae	midas_g_50073	0.4%
Bacteria	Chloroflexi	Anaerolineae	Ardenticatenales	Ca_Promineofilaceae	Ca_Promineofilum	0.2%
Bacteria	Chloroflexi	Anaerolineae	Ardenticatenales	Ca_Promineofilaceae	midas_g_16734	0.1%
Bacteria	Chloroflexi	Anaerolineae	Caldilineales	Caldilineaceae	—	0.3%
Bacteria	Chloroflexi	Anaerolineae	Caldilineales	Caldilineaceae	Litorilinea	0.3%
Bacteria	Chloroflexi	Anaerolineae	Caldilineales	Caldilineaceae	midas_g_12378	0.2%

Kingdom	Phylum	Class	Order	Family	Genus	Rel. freq. %
Bacteria	Chloroflexi	Anaerolineae	Caldilineales	Caldilineaceae	midas_g_169	0.1%
Bacteria	Chloroflexi	Anaerolineae	Caldilineales	Caldilineaceae	midas_g_2138	0.1%
Bacteria	Chloroflexi	Anaerolineae	Caldilineales	Caldilineaceae	midas_g_2582	0.2%
Bacteria	Chloroflexi	Anaerolineae	Caldilineales	Caldilineaceae	midas_g_3043	0.2%
Bacteria	Firmicutes	Bacilli	—	—	—	0.3%
Bacteria	Firmicutes	Bacilli	Bacillales	Bacillaceae	Bacillus	0.1%
Bacteria	Myxococcota	Myxococcia	Myxococcales	Anaeromyxobacteraceae	Anaeromyxobacter	0.1%
Bacteria	Myxococcota	Polyangia	Haliangiales	Haliangiaceae	Haliangium	0.7%
Bacteria	Patescibacteria	Microgenomatia	Ca_Pacebacteria	midas_f_25564	—	0.2%
Bacteria	Patescibacteria	Saccharimonadia	Saccharimonadales	—	—	0.1%
Bacteria	Planctomycetota	Phycisphaerae	Phycisphaerales	Phycisphaeraceae	—	1.4%
Bacteria	Planctomycetota	Phycisphaerae	Phycisphaerales	Phycisphaeraceae	SM1A02	1.1%
Bacteria	Planctomycetota	Phycisphaerae	mle1-8	—	—	0.1%
Bacteria	Planctomycetota	Phycisphaerae	mle1-8	midas_f_1686	—	0.4%
Bacteria	Planctomycetota	Planctomycetes	Gemmatales	Gemmataceae	—	0.2%
Bacteria	Planctomycetota	Planctomycetes	Gemmatales	Gemmataceae	midas_g_9516	0.1%
Bacteria	Planctomycetota	Planctomycetes	Pirellulales	Pirellulaceae	—	0.4%
Bacteria	Planctomycetota	Planctomycetes	Pirellulales	Pirellulaceae	midas_g_1097	0.1%
Bacteria	Planctomycetota	Planctomycetes	Planctomycetales	Rubinisphaeraceae	Planctomicrobium	0.3%
Bacteria	Planctomycetota	Planctomycetes	midas_o_1071	midas_f_1071	—	0.1%
Bacteria	Planctomycetota	Planctomycetes	midas_o_1071	midas_f_1071	midas_g_29742	0.1%
Bacteria	Planctomycetota	Planctomycetes	midas_o_1071	midas_f_1071	midas_g_39032	0.6%
Bacteria	Proteobacteria	—	—	—	—	0.1%
Bacteria	Proteobacteria	Alphaproteobacteria	—	—	—	0.3%
Bacteria	Proteobacteria	Alphaproteobacteria	Azospirillales	midas_f_406	midas_g_2759	0.1%
Bacteria	Proteobacteria	Alphaproteobacteria	Kiloniellales	Fodinicurvataceae	midas_g_34634	0.1%
Bacteria	Proteobacteria	Alphaproteobacteria	Micavibrionales	Micavibrionaceae	—	0.1%
Bacteria	Proteobacteria	Alphaproteobacteria	Micavibrionales	midas_f_25039	midas_g_31560	0.2%
Bacteria	Proteobacteria	Alphaproteobacteria	Rhizobiales	—	—	0.4%
Bacteria	Proteobacteria	Alphaproteobacteria	Rhizobiales	Amb-16S-1323	midas_g_27435	0.1%
Bacteria	Proteobacteria	Alphaproteobacteria	Rhizobiales	Hyphomicrobiaceae	—	0.6%
Bacteria	Proteobacteria	Alphaproteobacteria	Rhizobiales	Hyphomicrobiaceae	Hyphomicrobium	0.4%
Bacteria	Proteobacteria	Alphaproteobacteria	Rhizobiales	Hyphomicrobiaceae	Pedomicrobium	0.6%
Bacteria	Proteobacteria	Alphaproteobacteria	Rhizobiales	Methyloligellaceae	—	0.8%
Bacteria	Proteobacteria	Alphaproteobacteria	Rhizobiales	Methyloligellaceae	midas_g_11150	0.2%
Bacteria	Proteobacteria	Alphaproteobacteria	Rhizobiales	Methyloligellaceae	midas_g_12692	0.1%

Kingdom	Phylum	Class	Order	Family	Genus	Rel. freq. %
Bacteria	Proteobacteria	Alphaproteobacteria	Rhizobiales	Rhizobiaceae	—	1.9%
Bacteria	Proteobacteria	Alphaproteobacteria	Rhizobiales	Rhizobiaceae	Allorhizobium-Neorhizobium-Pararhizobium-Rhizobium	0.2%
Bacteria	Proteobacteria	Alphaproteobacteria	Rhizobiales	Rhizobiaceae	Aquamicrobium	0.3%
Bacteria	Proteobacteria	Alphaproteobacteria	Rhizobiales	Rhizobiaceae	Mesorhizobium	2.9%
Bacteria	Proteobacteria	Alphaproteobacteria	Rhizobiales	Rhizobiaceae	Pseudaminobacter	0.1%
Bacteria	Proteobacteria	Alphaproteobacteria	Rhizobiales	Xanthobacteraceae	—	0.2%
Bacteria	Proteobacteria	Alphaproteobacteria	Rhizobiales	Xanthobacteraceae	midas_g_1919	0.1%
Bacteria	Proteobacteria	Alphaproteobacteria	Rhizobiales	Xanthobacteraceae	midas_g_21520	0.1%
Bacteria	Proteobacteria	Alphaproteobacteria	Rhodobacterales	Rhodobacteraceae	—	0.4%
Bacteria	Proteobacteria	Alphaproteobacteria	Rhodobacterales	Rhodobacteraceae	Amaricoccus	0.4%
Bacteria	Proteobacteria	Alphaproteobacteria	Sphingomonadales	Sphingomonadaceae	—	0.1%
Bacteria	Proteobacteria	Alphaproteobacteria	Sphingomonadales	Sphingomonadaceae	Sphingobium	0.1%
Bacteria	Proteobacteria	Alphaproteobacteria	Tistrellales	Geminicoccaceae	—	0.3%
Bacteria	Proteobacteria	Alphaproteobacteria	Tistrellales	Geminicoccaceae	Ca_Alysiosphaera	0.1%
Bacteria	Proteobacteria	Alphaproteobacteria	Tistrellales	Geminicoccaceae	midas_g_5706	1.7%
Bacteria	Proteobacteria	Alphaproteobacteria	midas_o_24	midas_f_107	midas_g_2332	0.1%
Bacteria	Proteobacteria	Gammaproteobacteria	—	—	—	0.1%
Bacteria	Proteobacteria	Gammaproteobacteria	Burkholderiales	—	—	0.6%
Bacteria	Proteobacteria	Gammaproteobacteria	Burkholderiales	Alcaligenaceae	—	0.1%
Bacteria	Proteobacteria	Gammaproteobacteria	Burkholderiales	Burkholderiaceae	—	0.4%
Bacteria	Proteobacteria	Gammaproteobacteria	Burkholderiales	Burkholderiaceae	Lautropia	14.8%
Bacteria	Proteobacteria	Gammaproteobacteria	Burkholderiales	Burkholderiaceae	Limnobacter	4.3%
Bacteria	Proteobacteria	Gammaproteobacteria	Burkholderiales	Comamonadaceae	—	0.9%
Bacteria	Proteobacteria	Gammaproteobacteria	Burkholderiales	Comamonadaceae	Diaphorobacter	0.1%
Bacteria	Proteobacteria	Gammaproteobacteria	Burkholderiales	Comamonadaceae	Hydrogenophaga	1.9%
Bacteria	Proteobacteria	Gammaproteobacteria	Burkholderiales	Comamonadaceae	Leptothrix	0.1%
Bacteria	Proteobacteria	Gammaproteobacteria	Burkholderiales	Comamonadaceae	Ottowia	0.4%
Bacteria	Proteobacteria	Gammaproteobacteria	Burkholderiales	Comamonadaceae	Rubrivivax	0.1%
Bacteria	Proteobacteria	Gammaproteobacteria	Burkholderiales	Comamonadaceae	midas_g_81	0.1%
Bacteria	Proteobacteria	Gammaproteobacteria	Burkholderiales	Rhodocyclaceae	—	0.5%
Bacteria	Proteobacteria	Gammaproteobacteria	Burkholderiales	Rhodocyclaceae	Azoarcus	0.1%
Bacteria	Proteobacteria	Gammaproteobacteria	Burkholderiales	Rhodocyclaceae	Thauera	38.3%
Bacteria	Proteobacteria	Gammaproteobacteria	Burkholderiales	Rhodocyclaceae	Zoogloea	0.1%
Bacteria	Proteobacteria	Gammaproteobacteria	Burkholderiales	Rhodocyclaceae	midas_g_26	0.2%
Bacteria	Proteobacteria	Gammaproteobacteria	Burkholderiales	TRA3-20	midas_g_1667	0.2%
Bacteria	Proteobacteria	Gammaproteobacteria	Burkholderiales	TRA3-20	midas_g_3776	0.1%

Kingdom	Phylum	Class	Order	Family	Genus	Rel. freq. %
Bacteria	Proteobacteria	Gammaproteobacteria	Ectothiorhodospirales	Thioalkalispiraceae	—	0.1%
Bacteria	Proteobacteria	Gammaproteobacteria	Legionellales	Legionellaceae	Legionella	0.5%
Bacteria	Proteobacteria	Gammaproteobacteria	Pseudomonadales	Moraxellaceae	Acinetobacter	0.3%
Bacteria	Proteobacteria	Gammaproteobacteria	Run-SP154	midas_f_27	midas_g_3775	0.7%
Bacteria	Proteobacteria	Gammaproteobacteria	Run-SP154	midas_f_27	midas_g_5853	0.3%
Bacteria	Proteobacteria	Gammaproteobacteria	Steroidobacteriales	Steroidobacteraceae	—	0.1%
Bacteria	Proteobacteria	Gammaproteobacteria	Xanthomonadales	—	—	1.1%
Bacteria	Proteobacteria	Gammaproteobacteria	Xanthomonadales	Rhodanobacteraceae	—	0.9%
Bacteria	Verrucomicrobiota	Kiritimatiellae	WCHB1-41	midas_f_28177	midas_g_28177	0.1%
Bacteria	Verrucomicrobiota	Verrucomicrobiae	Pedosphaerales	Pedosphaeraceae	Oikopleura	0.1%

Relative frequencies may not sum to 100% due to rounding and low-abundance filtering (< 0.10%). Filtered cumulative relative frequency: 4.63%.



Relative frequencies may not sum to 100% due to rounding and low-abundance filtering (< 0.10%). Filtered cumulative relative frequency: 4.63%.